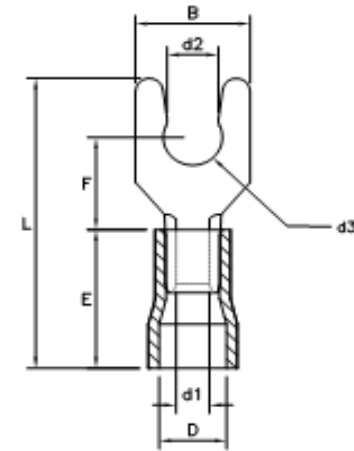


Vinyl Insulated Locking Spade Terminal



Drawn - SD

Approved - KM

Material - Copper / Vinyl Insulation

Title - Vinyl Insulated Locking Spade Terminal



Part Number	Wire Range	Insulated Color	Electrical Rating Max	d2	d3	B	F	L	E	D	d1
S22-6V-L	22-18 AWG	RED	105C / 600 Volts	0.130	0.140	0.232	0.250	0.838	0.405	0.218	0.165
S22-8V-L	22-18 AWG	RED	105C / 600 Volts	0.155	0.165	0.286	0.250	0.838	0.405	0.218	0.165
S22-10V-L	22-18 AWG	RED	105C / 600 Volts	0.189	0.208	0.317	0.270	0.838	0.405	0.218	0.165
S16-6V-L	16-14 AWG	BLUE	105C / 600 Volts	0.138	0.144	0.234	0.235	0.845	0.409	0.242	0.181
S16-8V-L	16-14 AWG	BLUE	105C / 600 Volts	0.150	0.169	0.285	0.245	0.845	0.409	0.242	0.181
S16-10V-L	16-14 AWG	BLUE	105C / 600 Volts	0.194	0.208	0.339	0.300	0.845	0.409	0.242	0.181
S12-6V-L	12-10 AWG	YELLOW	105C / 600 Volts	0.138	0.145	0.340	0.289	0.992	0.492	0.316	0.255
S12-8V-L	12-10 AWG	YELLOW	105C / 600 Volts	0.145	0.165	0.374	0.300	0.992	0.492	0.316	0.255
S12-10V-L	12-10 AWG	YELLOW	105C / 600 Volts	0.169	0.209	0.374	0.295	0.992	0.492	0.316	0.255