

POLARIS[®]

COMPRESSION PINS, SPLICES AND TAPS

POLARIS MAKES THE CONNECTION

Our compression connectors are the pro's choice for reliability and ease of use. They're compatible with many standard crimp tools and come with clearly legible size markings to save installers time. Plus, we offer a complete range for any application, from power distribution to data centers.



THE POLARIS DIFFERENCE

Improved performance

Experience better conductivity, lower signal loss, and reduced downtime with Polaris connectors.

Enhanced durability

Our corrosion-resistant connectors withstand the elements, ensuring long-lasting performance.

Simplified installation

Save time and labor with our easy-to-use compression design.

Clear color coding

Each connector is color coded with clear indication of conductor size and crimp location.

UL listed with most major brand tools

Use your favorite crimp tool and die. Polaris connectors are listed for use with tools from most major brands

MULTIPLE OPTIONS

ALUMINUM SPLICES



ASC-T

COPPER SPLICES



SC, SC-B

BI-METALLIC PIN TERMINALS



PT

ALUMINUM PIN TERMINAL



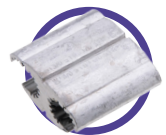
PTS, PTO

COMPRESSION SLEEVES



ISC

COMPRESSOR TAPS



WRD

COMPRESSION PINS

PT SERIES

Bi-Metallic

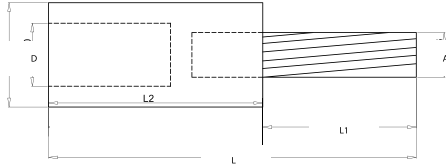


FEATURES

- Designed to facilitate termination of aluminum conductors to copper terminals.
- Pin: Stranded Copper, tin plated.
- Connector is pre-filled with oxide inhibitor.
- A cover is provided for quick installation.
- Fully rated for incoming conductor (Not derated by the pin).

SPECIFICATIONS

- UL486A/B Listed for Wire Connector.
- Class B/C compressed, concentric, and compact conductor.
- UL listed to 35 kV when properly installed to cable manufacturers specifications.
- Use of cover reduces voltage specification to 600V max.
- Temperature rating 90C AL9CU.



SKU	L (IN)	W (IN)	H (IN)	Material	Conductor Rating	Conductor Type	Die Color Code	Inside Diameter (IN)	Outside Diameter (IN)	Barrel Length (IN)	Wire Range	Pin Size (IN)	Pin Length L1 (IN)	Pin Diameter A (IN)
PT6	2.13	0.64	0.64	Al	AL9CU	Al	Blue	0.18	0.64	1.25	6 AWG	# 8	2.125	0.144
PT4	2.45	0.91	0.64	Al	AL9CU	Al	Orange	0.24	0.64	1.54	4 AWG	# 6	2.450	0.188
PT2	2.45	0.64	0.64	Al	AL9CU	Al	Orange	0.31	0.64	1.54	2 AWG	# 4	2.440	0.228
PT1	2.54	0.64	0.64	Al	AL9CU	Al	Orange	0.35	0.64	1.54	1 AWG	# 3	2.539	0.279
PT1/0	3.41	0.90	0.90	Al	AL9CU	Al	Orange	0.37	0.90	2.14	1/0 AWG	# 2	3.405	0.287
PT2/0	3.34	0.88	0.88	Al	AL9CU	Al	Red	0.43	0.88	2.09	2/0 AWG	# 1	3.342	0.322
PT3/0	3.60	0.91	0.91	Al	AL9CU	Al	Red	0.48	0.91	2.14	3/0 AWG	1/0	3.598	0.362
PT4/0	3.52	0.91	0.91	Al	AL9CU	Al	Red	0.55	0.91	2.06	4/0 AWG	2/0	3.523	0.405
PT250	3.86	1.14	1.14	Al	AL9CU	Al	Brown	0.59	1.14	2.31	250 MCM	3/0	3.858	0.44
PT300	4.09	1.16	1.16	Al	AL9CU	Al	Brown	0.65	1.16	2.39	300 MCM	4/0	4.086	0.523
PT350	4.09	1.16	1.16	Al	AL9CU	Al	Brown	0.70	1.16	2.38	350 MCM	4/0	4.082	0.496
PT400	4.36	1.30	1.30	Al	AL9CU	Al	Pink	0.76	1.30	2.38	400 MCM	250	4.362	0.582
PT500	4.19	1.33	1.33	Al	AL9CU	Al	Pink	0.84	1.33	2.35	500 MCM	350	4.192	0.681
PT600	4.95	1.50	1.50	Al	AL9CU	Al	Yellow	0.92	1.50	3.05	600 MCM	350	4.960	0.688
PT750	5.01	1.48	1.48	Al	AL9CU	Al	Yellow	1.02	1.48	3.01	750 MCM	500	5.007	0.787

COMPRESSION PINS

PTS SERIES

Dual Rated Center Pin

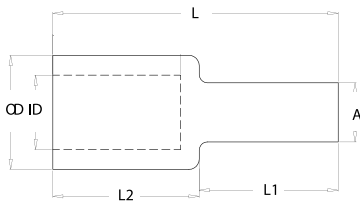


FEATURES

- All-aluminum pin terminal designed for termination of both aluminum and copper conductors.
- The pin is solid aluminum.
- Tin plated to provide low contact resistance and oxidation protection.
- Connector is prefilled with Oxide Inhibitor and capped with color coded cap indicating color of die to use.
- A cover is provided for quick installation.
- Fully rated for incoming conductor (Not derated by the pin).

SPECIFICATIONS

- UL486A/B Listed for Wire Connector.
- Class B/C compressed, concentric, and compact conductor.
- UL listed to 35 kV when properly installed to cable manufacturers specifications.
- Use of cover reduces voltage specification to 600V max.
- Temperature rating 90C AL9CU.



SKU	L (IN)	W (IN)	H (IN)	Material	Conductor Rating	Conductor Type	Die Color Code	Inside Diameter (IN)	Outside Diameter (IN)	Barrel Length (IN)	Wire Range	Pin Size (IN)	Pin Length L1 (IN)	Pin Diameter A (IN)
PTS6	1.85	0.60	0.60	Al	AL9CU	Cu, Al	Tan	0.19	0.60	1.17	6 AWG	4	0.681	0.240
PTS4	1.85	0.60	0.60	Al	AL9CU	Cu, Al	Tan	0.24	0.60	1.17	4 AWG	4	0.681	0.240
PTS2	1.85	0.60	0.60	Al	AL9CU	Cu, Al	Tan	0.30	0.60	1.17	2 AWG	4	0.680	0.240
PTS1	2.01	0.60	0.60	Al	AL9CU	Cu, Al	Tan	0.32	0.60	1.17	1 AWG	3	0.830	0.250
PTS1/0	2.01	0.60	0.60	Al	AL9CU	Cu, Al	Tan	0.37	0.60	1.17	1/0 AWG	2	0.830	0.290
PTS2/0	2.21	0.85	0.85	Al	AL9CU	Cu, Al	White	0.43	0.85	1.37	2/0 AWG	1	0.830	0.330
PTS3/0	2.59	0.85	0.85	Al	AL9CU	Cu, Al	White	0.48	0.85	1.37	3/0 AWG	1/0	1.220	0.370
PTS4/0	2.59	0.85	0.85	Al	AL9CU	Cu, Al	White	0.54	0.85	1.37	4/0 AWG	2/0	1.220	0.420
PTS250	2.63	1.10	1.10	Al	AL9CU	Cu, Al	Brown	0.60	1.10	1.41	250 MCM	3/0	1.220	0.460
PTS300	2.75	1.10	1.10	Al	AL9CU	Cu, Al	Brown	0.66	1.10	1.41	300 MCM	4/0	1.330	0.530
PTS350	2.75	1.10	1.10	Al	AL9CU	Cu, Al	Brown	0.72	1.10	1.41	350 MCM	250	1.330	0.570
PTS400	3.08	1.31	1.31	Al	AL9CU	Cu, Al	Pink	0.77	1.31	1.48	400 MCM	300	1.590	0.620
PTS500	3.08	1.31	1.31	Al	AL9CU	Cu, Al	Pink	0.84	1.31	1.48	500 MCM	350	1.590	0.680
PTS600	3.67	1.46	1.46	Al	AL9CU	Cu, Al	Yellow	0.92	1.46	2.03	600 MCM	400	1.640	0.720
PTS750	3.79	1.46	1.46	Al	AL9CU	Cu, Al	Yellow	1.03	1.46	2.03	750 MCM	500	1.750	0.810

COMPRESSION PINS

PTO SERIES

Dual Rated Offset Pin

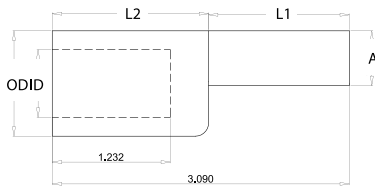


FEATURES

- All-aluminum pin terminal designed for termination of both aluminum and copper conductors.
- Pin is offset for use in tight applications while providing ease of installation in side by side applications.
- The pin is solid aluminum.
- Tin plated to provide low contact resistance and oxidation protection.
- Connector is prefilled with Oxide Inhibitor and capped with color coded cap indicating color of die to use.
- A cover is provided for quick installation.
- Fully rated for incoming conductor (Not derated by the pin).

SPECIFICATIONS

- UL486A/B Listed for Wire Connector.
- Class B/C compressed, concentric, and compact conductor.
- UL listed to 35 kV when properly installed to cable manufacturers specifications.
- Use of cover reduces voltage specification to 600V max.
- Temperature rating 90C AL9CU.



SKU	L (IN)	W (IN)	H (IN)	Material	Conductor Rating	Conductor Type	Die Color Code	Inside Diameter (IN)	Outside Diameter (IN)	Barrel Length (IN)	Wire Range	Pin Size (IN)	Pin Length L1 (IN)	Pin Diameter A (IN)
PTO-2/0	2.70	0.85	0.85	Al	AL9CU	Cu, Al	White	0.44	0.85	1.57	2/0 AWG	1	1.120	0.330
PTO-3/0	2.80	0.85	0.85	Al	AL9CU	Cu, Al	White	0.50	0.85	1.55	3/0 AWG	1/0	1.250	0.370
PTO-4/0	2.79	0.85	0.85	Al	AL9CU	Cu, Al	White	0.55	0.85	1.51	4/0 AWG	2/0	1.270	0.420
PTO-250	2.79	1.09	1.09	Al	AL9CU	Cu, Al	Brown	0.59	1.09	1.51	250 MCM	3/0	1.270	0.460
PTO-300	3.09	1.09	1.09	Al	AL9CU	Cu, Al	Brown	0.66	1.09	1.62	300 MCM	4/0	1.460	0.530
PTO-350	3.09	1.09	1.09	Al	AL9CU	Cu, Al	Brown	0.70	1.09	1.62	350 MCM	250	1.460	0.570
PTO-400	3.39	1.31	1.31	Al	AL9CU	Cu, Al	Pink	0.76	1.31	1.70	400 MCM	300	1.680	0.620
PTO-500	3.39	1.31	1.31	Al	AL9CU	Cu, Al	Pink	0.84	1.31	1.70	500 MCM	350	1.680	0.680
PTO-600	4.00	1.46	1.46	Al	AL9CU	Cu, Al	Yellow	0.82	1.46	2.27	600 MCM	400	1.720	0.720
PTO-750	4.19	1.46	1.46	Al	AL9CU	Cu, Al	Yellow	1.03	1.46	2.46	750 MCM	500	1.720	0.810

COMPRESSION TAPS

WRD SERIES

Wide Range Tap Connectors



FEATURES

- For combinations of aluminum and aluminum-copper conductors.
- Standard compression tools and dies install all sizes.
- Formable ribs provide broader contact area.
- Fold-in tabs provide positive tab interlock as tool closes.
- Made from high strength aluminum alloy.
- All connectors are irreversible.

SPECIFICATIONS

- Use of cover reduces voltage specification to 600V max.

SKU	Standard Conductor Range						Compact Conductor Range			
	A Groove			B Groove			A Groove		B Groove	
	ACSR	STR	SOL	ACSR2	STR3	SOL4	ACSR5	STR6	ACSR7	STR8
WRD159	-	1.00	-	-	1	-	1	1	1	1
	2.00	2.00	2.00	2	2	2	2	2	2	2
	3.00	3.00	3.00	3	3	3	3	3	3	3
	4.00	4.00	4.00	4	4	4	4	4	4	4
	6.00	6.00	6.00	6	6	6	6	6	6	6
WRD189	-	-	3/0	-	-	1/0	-	-	-	-
	-	2/0	2/0	-	1	1	2/0	2/0	1	1
	1/0	1/0	1/0	2	2	1/0	1/0	2	2	-
	1.00	1.00	1.00	3	3	3	1	1	3	3
	2.00	2.00	-	4	4	4	2	2	4	4
	3.00	-	-	6	6	6	-	-	6	6
WRD279	-	-	4/0	-	3/0	3/0	-	-	-	-
	-	3/0	3/0	2/0	2/0	2/0	3/0	3/0	3/0	3/0
	2/0	2/0	2/0	1/0	1/0	-	2/0	2/0	2/0	2/0
	1/0	4/0	-	1	-	-	1/0	1/0	1/0	1/0
	1.00	-	-	-	-	-	-	-	-	-
WRD289	-	-	-	-	-	1/0	-	-	-	-
	-	-	-	-	1	1	-	-	1	1
	-	-	4/0	2	2	2	3/0	3/0	2	2
	-	3/0	3/0	3	3	3	2/0	-	3	3
	2/0	2/0	-	4	4	4	-	-	4	4
1/0	-	-	6	6	6	-	-	6	6	
WRD379	-	-	-	-	-	1/0	-	-	-	-
	-	-	-	-	1	1	-	-	1	1
	-	-	-	2	2	2	266-18/1	266	2	2
	4/0	4/0	-	3	3	3	250	250	3	3
	3/0	-	-	4	4	4	4/0	4/0	4	4
WRD399	-	-	-	6	6	6	-	-	6	6
	-	-	-	-	-	3/0	266-18/1	266	-	-
	-	-	-	2/0	2/0	2/0	-	250	-	3/0
	4/0	4/0	-	1/0	1/0	-	4/0	4/0	2/0	2/0
	3/0	3/0	-	1	-	-	3/0	-	1/0	1/0
WRD419	-	-	-	-	-	-	266-18/1	266-18/1	266-18/1	266
	4/0	4/0	-	4/0	4/0	-	-	250	-	250
	3/0	3/0	-	3/0	3/0	-	4/0	4/0	4/0	4/0

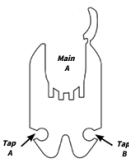


FIGURE 1

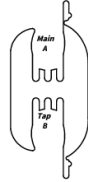


FIGURE 2



FIGURE 3

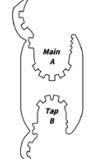


FIGURE 4



COMPRESSION TAPS

WRD SERIES (CONT'D)

Wide Range Tap Connectors



SKU	Standard Conductor Range						Compact Conductor Range			
	A Groove			B Groove			A Groove		B Groove	
SKU	ACSR	STR	SOL	ACSR2	STR3	SOL4	ACSR5	STR6	ACSR7	STR8
WRD9	-	-	1.00	-	8	8	-	-	-	-
	3.00	2.00	2.00	-	10	10	-	-	-	-
	4.00	3.00	3.00	-	12	12	-	-	-	-
	6.00	4.00	4.00	-	14	14	-	-	-	-
	6.00	-	-	-	-	-	-	-	-	-
WRD139	-	2/0	-	-	-	-	-	-	-	-
	1/0	1/0	-	-	-	-	-	-	-	-
	1.00	1.00	1.00	-	-	6	-	-	-	-
	2.00	2.00	2.00	-	-	-	-	-	-	-
	3.00	3.00	-	-	10	10	-	-	-	-
	4.00	-	-	-	-	-	-	-	-	-
WRD149	-	-	2.00	-	-	2	-	2	-	2
	-	3.00	3.00	-	3	3	-	3	3	3
	4.00	4.00	4.00	4	4	4	4	4	4	4
	6.00	6.00	6.00	6	6	6	6	6	6	6
WRD179	1/0	1/0	-	-	-	2	-	2/0	-	2
	1.00	1.00	1.00	-	3	3	1/0	1/0	-	3
	2.00	2.00	-	4	4	4	1	1	4	4
	3.00	-	-	6	6	6	2	2	6	6
WRD199	1/0	1/0	-	-	1	1	-	2/0	1	1
	1.00	1.00	1.00	2	2	2	1/0	1/0	2	2
	2.00	2.00	-	3	3	-	1	1	3	-
	3.00	-	-	4	4	-	2	2	4	-
WRD219	1/0	1/0	-	1/0	1/0	-	-	2/0	-	2/0
	1.00	1.00	-	1	1	-	1/0	1/0	1/0	1/0
	-	-	-	2	-	-	-	-	1	-
WRD259	-	2/0	-	-	2/0	-	2/0	2/0	2/0	2/0
	1/0	1/0	-	1/0	1/0	-	1/0	1/0	1/0	1/0
	1.00	-	-	1	-	-	-	-	-	-
WRD299	-	3/0	-	-	-	2	3/0	3/0	-	2
	2/0	2/0	-	-	3	3	2/0	-	-	3
	1/0	-	-	4	4	4	-	-	4	4
	-	-	-	6	6	6	-	-	6	6
WRD359	-	-	-	-	1/0	-	-	-	-	-
	4/0	4/0	-	1	1	1	266	266	1/0	1/0
	3/0	3/0	-	2	2	-	-	250	1	1
	-	-	-	3	3	-	4/0	4/0	2	2
	-	-	-	4	-	-	3/0	-	-	-
WRD369	4/0	4/0	-	1/0	1/0	1/0	266	266	1/0	1/0
	3/0	3/0	-	1	1	1	-	250	1	1
	2/0	-	-	2	2	2	4/0	4/0	2	2
	-	-	-	3	3	-	3/0	3/0	3	-
	-	-	-	4	4	-	-	-	4	-
WRD389	-	-	-	-	-	-	266	266	-	-
	4/0	4/0	-	-	3/0	-	-	250	3/0	3/0
	3/0	3/0	-	2/0	2/0	-	4/0	4/0	2/0	-
	-	-	-	1/0	-	-	3/0	-	-	-

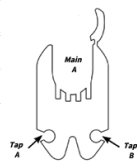


FIGURE 1

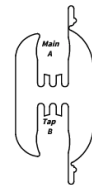


FIGURE 2



FIGURE 3

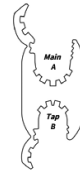


FIGURE 4

COMPRESSION SPLICES

ASC-T SERIES

Dual Rated Aluminum

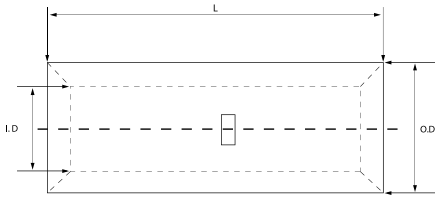


FEATURES

- Produced from high conductivity aluminum tubing.
- Center stop assures proper cable installation.
- Electro-tin plated for corrosion resistance.
- Color coded and marked with die index information.
- Pre-filled with oxide inhibitor and capped with color coded cap.
- Listed for 35KV maximum when properly installed to cable manufacturers specifications.

SPECIFICATIONS

- cULus Listed for Wire Connector.
- UL486A/B Listed for Wire Connector.
- UL Listed to 35kV when properly installed to cable manufacturers specifications.
- Temperature Rating: 90 °C. AL9CU



SKU	Material	Conductor Type	Die Color Code	Splice Inside Diameter (ID) (IN)	Splice Outside Diameter (OD) (IN)	Splice Length (IN)	Wire Range	Expanded Wire Range
ASC8T	Al	Cu, Al	Blue	0.18	0.30	1.38	8 AWG	8 AWG
ASC6T	Al	Cu, Al	Gray	0.20	0.34	1.63	6 AWG	6 AWG - 8 AWG
ASC4T	Al	Cu, Al	Green	0.25	0.44	2.00	4 AWG	4 AWG-6 AWG
ASC2T	Al	Cu, Al	Pink	0.31	0.53	2.38	2 AWG	2 AWG-6 AWG
ASC1T	Al	Cu, Al	Gold	0.35	0.53	2.38	1 AWG	1 AWG-6 AWG
ASC1/0T	Al	Cu, Al	Tan	0.39	0.63	2.50	1/0 AWG	1/0 AWG - 6 AWG
ASC2/0T	Al	Cu, Al	Olive	0.44	0.69	2.63	2/0 AWG	2/0 AWG-4 AWG
ASC3/0T	Al	Cu, Al	Ruby	0.48	0.76	2.88	3/0 AWG	3/0-2 AWG
ASC4/0T	Al	Cu, Al	White	0.55	0.84	3.13	4/0 AWG	4/0 AWG - 1 AWG
ASC250T	Al	Cu, Al	Red	0.59	0.92	3.25	250 MCM	250 MCM-1/0 AWG
ASC300T	Al	Cu, Al	Blue	0.65	1.01	3.25	300 MCM	300 MCM-20 AWG
ASC350T	Al	Cu, Al	Brown	0.72	1.12	3.88	350 MCM	350 MCM-3/0 AWG
ASC400T	Al	Cu, Al	Green	0.76	1.19	4.88	400 MCM	400 MCM-4/0 AWG
ASC500T	Al	Cu, Al	Pink	0.84	1.32	5.00	500 MCM	500-250 MCM
ASC600T	Al	Cu, Al	Black	0.92	1.44	5.13	600 MCM	600 MCM-250 MCM
ASC750T	Al	Cu, Al	Yellow	1.03	1.60	5.38	750 MCM	750-500 MCM
ASC1000T	Al	Cu, Al	Brown	1.17	1.83	5.98	1000 MCM	ASC1000T

COMPRESSION SPLICES

C SERIES

Copper Long Barrel

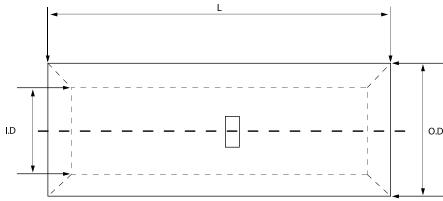


FEATURES

- Produced from high conductivity copper tubing.
- Serrations indicate proper crimp locations.
- Tin-plated to provide corrosion resistance.
- Marked with die index and color coded.
- Suitable for use at voltages up to 35KV provided connector is properly installed to cable manufacturer voltage stress relief instructions.

SPECIFICATIONS

- cULus Listed for Wire Connector.
- UL486A/B Listed for Wire Connector.
- For max ampacity, please consult current NEC manual.
- * CLASS B OR C BUILDING WIRE CU CABLE ONLY.
- Temperature Rating: 90 °C. 9CU
- Voltage: 600V.
- UL Listed to 35kV when properly installed to cable manufacturers specifications.

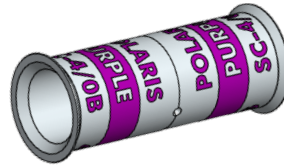


SKU	Material	Conductor Type	Die Color Code	Splice Inside Diameter (ID) (IN)	Splice Outside Diameter (OD) (IN)	Splice Length (IN)	Wire Range	Expanded Wire Range (Class B/C Only)
C-8	Cu	Cu	Red	0.17	0.27	1.75	8 AWG	8 AWG
C-6	Cu	Cu	Blue	0.21	0.30	1.75	6 AWG	6 AWG - 8 AWG
C-4	Cu	Cu	Gray	0.25	0.34	1.75	4 AWG	4 AWG-6 AWG
C-3	Cu	Cu	White	0.28	0.38	1.90	3 AWG	3 AWG-6 AWG
C-2	Cu	Cu	Brown	0.32	0.42	1.90	2 AWG	2 AWG-6 AWG
C-1	Cu	Cu	Green	0.36	0.47	2.20	1 AWG	1 AWG-6 AWG
C-1/0	Cu	Cu	Pink	0.39	0.52	2.20	1/0 AWG	1/0 AWG-6 AWG
C-2/0	Cu	Cu	Black	0.44	0.56	2.25	2/0 AWG	2/0 AWG-4 AWG
C-3/0	Cu	Cu	Orange	0.49	0.62	2.25	3/0 AWG	3/0 AWG-2 AWG
C-4/0	Cu	Cu	Purple	0.55	0.69	2.75	4/0 AWG	4/0 AWG-1 AWG
C-250	Cu	Cu	Yellow	0.59	0.75	3.25	250 MCM	250 MCM-1/0 AWG
C-300	Cu	Cu	White	0.66	0.82	3.50	300 MCM	300 MCM-20 AWG
C-350	Cu	Cu	Red	0.70	0.87	3.75	350 MCM	350 MCM-3/0 AWG
C-400	Cu	Cu	Blue	0.76	0.95	3.75	400 MCM	400 MCM-4/0 AWG
C-500	Cu	Cu	Brown	0.84	1.06	4.25	500 MCM	500-250 MCM
C-600	Cu	Cu	Green	0.93	1.19	4.50	600 MCM	600 MCM-250 MCM
C-750	Cu	Cu	Black	1.04	1.31	4.75	750 MCM	750 MCM-500 MCM
C-1000	Cu	Cu	White	1.19	1.53	6.12	1000 MCM	1000 MCM-750 MCM

COMPRESSION SPLICES

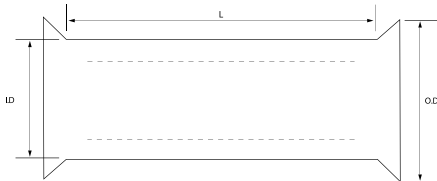
SC-B SERIES

Copper Short Barrel



FEATURES

- Splice has flared openings at both ends to ensure ease of cable insertion of flexible and extra-flexible cables such as locomotive, welding, mining cable and more.
- Positive center stop.
- Tin-plated for corrosion resistance.



SPECIFICATIONS

- UL 468A/B Listed Wire Connector.
- cULus Listed E155027.
- For max ampacity, please consult current NEC manual.
- Temperature Rating: 90 °C. 9CU.
- Voltage: 600V
- UL Listed to 35kV when properly installed to cable manufacturers specifications.
- For copper cables only.



SKU	Material	Conductor Type	Die Color Code	Splice Inside Diameter (ID) (IN)	Splice Outside Diameter (OD) (IN)	Splice Length (IN)	Wire Range	Expanded Wire Range
SC-1B	Cu	Cu	Green	0.36	0.47	1.80	1 AWG	1 AWG-6 AWG
SC-1/0B	Cu	Cu	Pink	0.39	0.52	1.60	1/0 AWG	1/0 AWG-6 AWG
SC-2/0B	Cu	Cu	Black	0.44	0.56	1.75	2/0 AWG	2/0 AWG-4 AWG
SC-3/0B	Cu	Cu	Orange	0.49	0.62	1.75	3/0 AWG	3/0 AWG-2 AWG
SC-4/0B	Cu	Cu	Purple	0.55	0.69	1.90	4/0 AWG	4/0 Awg-1 AWG
SC-300B	Cu	Cu	White	0.66	0.82	2.10	300 MCM	300 MCM-20 AWG

COMPRESSION SLEEVES

ISE SERIES

Dual Rated Insulated Service Entrance

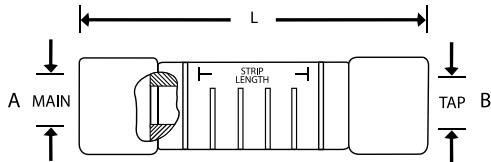


FEATURES

- Pre-insulated service entrance compression sleeves for fast and easy installation with standard tools and dies.
- For combinations of aluminum-aluminum and aluminum-copper conductors.
- Solid center barrier.

SPECIFICATIONS

- Meets or exceeds ANSI C119.4.
- Voltage: 600V max.
- For max ampacity, please consult current NEC manual.



SKU	Die Size (IN)	Tool	A - Conductor Range			B - Conductor Range			L (IN)
			ACSR	AWG (*Compact)	Color Code	ACSR2	AWG	Color Code3	
ISE61	5/8	OD581	-	8 STR-6 SOL	Green	-	8 STR-6 SOL	Green	2.78
ISE62	5/8	OD581	6.00	6 STR-4 SOL	Blue	-	10 STR-8 SOL	Brown	2.78
ISE63	5/8	OD581	6.00	6 STR-4 SOL	Blue	-	8 STR-6 SOL	Green	2.78
ISE64	5/8	OD581	6.00	6 STR-4 SOL	Blue	6	6 STR-4 SOL	Blue	2.78
ISE65	5/8	OD581	4.00	3-4 STR-2 SOL	Orange	-	10 STR-8 SOL	Brown	2.78
ISE66	5/8	OD581	4.00	3-4 STR-2 SOL	Orange	-	8 STR-6 SOL	Green	2.78
ISE67	5/8	OD581	4.00	3-4 STR-2 SOL	Orange	6	6 STR-4 SOL	Blue	2.78
ISE68	5/8	OD581	4.00	3-4 STR-2 SOL	Orange	4	3-4 STR-2 SOL	Orange	2.78
ISE71	5/8	OD581	2.00	1-2 STR	Red	6	6 STR-4 SOL	Blue	2.78
ISE72	5/8	OD581	2.00	1-2 STR	Red	4	3-4 STR-2 SOL	Orange	2.78
ISE73	5/8	OD581	2.00	1-2 STR	Red	2	1-2 STR	Red	2.78
ISE76	5/8	OD581	36526.00	36526	Yellow	4	3-4 STR-2 SOL	Orange	2.78
ISE77	5/8	OD581	36526.00	36526	Yellow	2	1-2 STR	Red	2.78
ISE78	5/8	OD581	36526.00	36526	Yellow	-	1/0 STR	Yellow	2.78
ISE135	0.840	OD581+BY377C	36526.00	1/0, 2/0 STR*	Yellow	2	1-2 STR	Red	5.50
ISE136	0.840	OD581+BY377C	36526.00	1/0, 2/0 STR*	Yellow	36526	1/0 STR, 2/0 COM	Yellow	5.50
ISE144	0.840	OD581+BY377C	36557.00	2/0, 3/0 STR*	Gray	4	3-4 STR-2 SOL	Orange	5.50
ISE145	0.840	OD581+BY377C	36557.00	2/0, 3/0 STR*	Gray	2	1-2 STR	Red	5.50
ISE146	0.840	OD581+BY377C	36557.00	2/0, 3/0 STR*	Gray	36526	1/0 STR, 2/0 COM	Yellow	5.50
ISE147	0.840	OD581+BY377C	36557.00	2/0, 3/0 STR*	Gray	36557	2/0 STR, 3/0 COM	Gray	5.50
ISE154	0.840	OD581+BY377C	36586.00	3/0, 4/0 STR*	Black	4	3-4 STR, 2 SOL	Orange	5.50
ISE155	0.840	OD581+BY377C	36586.00	3/0, 4/0 STR*	Black	2	1-2 STR	Red	5.50
ISE156	0.840	OD581+BY377C	36586.00	3/0, 4/0 STR*	Black	36526	1/0 STR, 2/0 COM	Yellow	5.50
ISE158	0.840	OD581+BY377C	36586.00	3/0, 4/0 STR*	Black	36586	3/0 STR, 4/0 COM	Black	5.50
ISE164	0.840	OD581+BY377C	36617.00	4/0 STR	Pink	4	3-4 STR-2 SOL	Orange	5.50
ISE165	0.840	OD581+BY377C	36617.00	4/0 STR	Pink	2	1-2 STR	Red	5.50
ISE167	0.840	OD581+BY377C	36617.00	4/0 STR	Pink	36557	2/0 STR, 3/0 COM	Gray	5.50
ISE168	0.840	OD581+BY377C	36617.00	4/0 STR	Pink	36586	3/0 STR, 4/0 COM	Black	5.50
ISE169	0.840	OD581+BY377C	36617.00	4/0 STR	Pink	36617	4/0 STR	Pink	5.50

COMPRESSION COVERS
C SERIES
 Dual Rated Insulated



FEATURES

- Hinged polyurethane cover for easy installation of WRD series tap connectors.
- Eliminates taping.
- Drain ports prevent accumulation of moisture.
- Ultraviolet stabilized.
- Cover has 600V max rating.

SKU	Capacity	Material
C2	All 5/8" OD. Sleeve 2" long or less	Polyurethane
C5	All "O" die taps 1 3/4" long or less	Polyurethane
C7	All "D" die taps 2 1/2" long or less	Polyurethane
C9	All "N" die taps up to 2" long	Polyurethane

STACKING ADAPTERS
SA SERIES
 For Compression Terminals



FEATURES

- Tin-plated pure aluminum for good conductivity and corrosion resistance.
- Allows for stacking of standard two hole compression lugs and keeps inventories to a minimum.
- To stack 4-hole NECA drilled terminals, use two adapters assembled in parallel.

SKU	H (IN)	Connector Size Range
SA10-400	0.875	1/0-400 MCM
SA500-1000	1.125	500-1000 MCM

MAKING — THE — CONNECTION



Scan for more
information



COMPRESSION CONNECTORS