

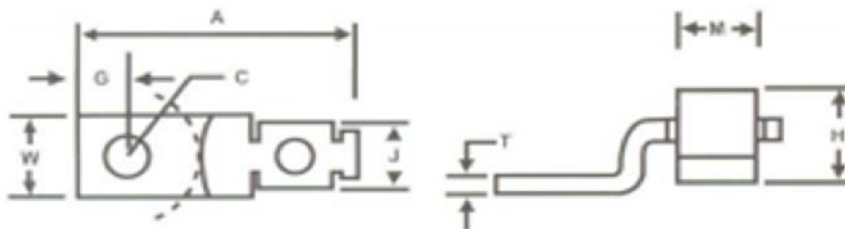
Single Solderless Lugs

Drawn - SD

Approved - KM

Material - Copper

Title - Single Solderless Lugs



Part Number	Wire Range	Ampere Rating	A	W	G	C	T	M	H	J
DE704	6-14 AWG	35	1.19	0.38	0.23	0.25	0.07	0.43	0.50	0.33
DE705	2-8 AWG	70	1.55	0.50	0.25	0.34	0.09	0.50	0.65	0.47
DE711	4-14 AWG	70	1.31	0.50	0.25	0.28	0.08	0.43	0.56	0.38
DE706	1/0-6 AWG	125	1.97	0.63	0.50	0.28	0.13	0.63	0.88	0.62
DE713	3/0-4 AWG	175	2.19	0.75	0.44	0.50	0.13	0.75	1.03	0.71
DE707	4/0-2 AWG	225	2.38	1.00	0.47	0.56	0.13	1.00	1.17	0.75
DE710	350 MCM-1/0 AWG	300	3.16	1.00	0.50	0.94	0.19	1.23	1.39	1.00
DE708	500 MCM-4/0 AWG	400	4.25	1.50	0.88	1.00	0.19	1.50	1.57	1.16
DE709	1000-600 MCM	650	4.63	2.00	1.16	0.69	0.25	1.88	2.34	1.68