

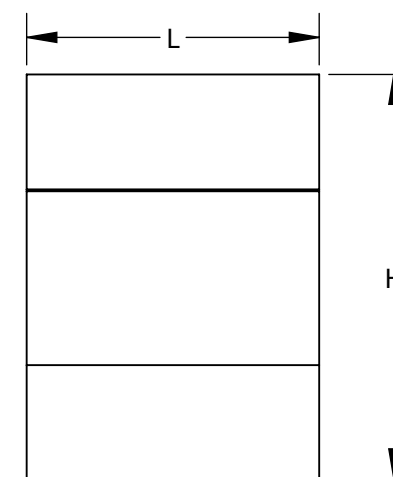
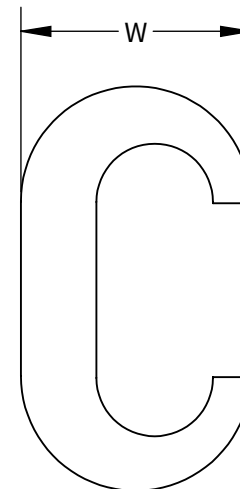
FEATURES:

1. MANUFACTURED FROM HIGH STRENGTH ELECTROLYTIC COPPER.
2. APPLICATION INCLUDE COPPER TAPPING, SPLICING/PIG TAILING.
3. COMPACT SIZE ALLOWS FOR EASY TAPING AND INSULATION OF CONNECTION.
4. COLOR CODE FOR PROPER CRIMP DIE SELECTION.
5. LOW INSTALLATION COST.
6. RANGE TAKING CONNECTORS ALLOWS FOR LOW INVENTORY REQUIREMENT.
7. ALLOWS FOR 2 CONTINUOUS PARALLEL CONDUCTORS.
8. TEMPERATURE AND VOLTAGE RATING: 90C, 600V

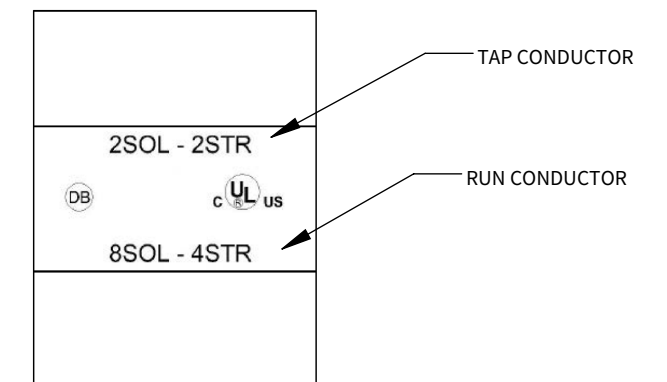
Copper Compression C-Tap CTH-Series

Catalog Number	COPPER CONDUCTOR RANGE SIZE		MIN # OF CRIMP	STRIP LENGTH	STD.CTN.QTY	NSI DIE CODE	NSI TOOL	DIMENSIONS		
	MAIN (RUN)	TAP (BRANCH)						L	W	H
CTH-46	6 STR - 4 STR	6 STR - 6 STR	1	3/4	25	KC12-1/0	N1240	0.625	0.4375	0.750
CTH-44	6 STR - 4 STR	4 STR - 4 STR	1	3/4	25	KC12-1/0	N1240	0.625	0.4375	.8125
CTH-24	2 STR - 2 STR	8 STR - 4 STR	1	7/8	10	C	0D581	0.750	0.625	1.00
CTH-22	2 STR - 2 STR	2 STR - 2 STR	1	7/8	25	C	0D581	0.750	0.625	1.00
CTH-2020	1/0 STR - 2/0 STR	1/0 STR - 2/0 STR	1	11/16	3	0	0D581	0.9375	.8125	.722
CTH-4020	3/0 STR - 4/0 STR	1/0 STR - 2/0 STR	1	13/16	3	D3	0D581	0.6875	1.00	1.875
CTH-4040	3/0 STR - 4/0 STR	3/0 STR - 4/0 STR	1	13/16	3	D3	0D581	0.6875	1.00	1.1875

DIMENSIONS ARE INCHES AND ARE SUBJECT TO CHANGE WITHOUT NOTICE



TYPICAL MARKINGS



UL SPECIFICATIONS

UL486A LISTED WIRE CONNECTOR

UL467 LISTED GROUNDING & BONDING

CLASS B OR C BUILDING WIRE CU CABLE ONLY

TO ORDER NSI PRODUCTS CALL
CUSTOMER SERVICE DEPT
@800-321-5847

FOR NAME OF LOCAL SALES AGENT
techteam@nsiindustries.com

FOR PRODUCT INFO: www.nsiindustries.com

