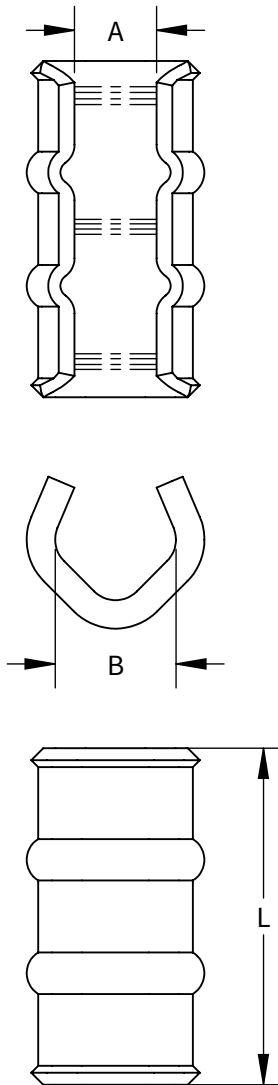


- FEATURES:
1. THESE TAPS ENSURE POSITIVE, ALL-AROUND COMPRESSION WITH LOW RESISTANCE AND HIGH PULL OUT VALES.
 2. MADE OF HIGH CONDUCTIVITY COPPER, THEY SATISFY THE REQUIREMENTS OF NEC250-81 AND 250-91 FOR CONNECTING TO THE GROUND ELECTRODE SYSTEM.
 3. APPLICATION INCLUDE COPPER TAPPING, SPLICING/PIG TAILING.
 4. COMPACT SIZE ALLOWS FOR EASY TAPING AND INSULATION OF CONNECTION.
 5. COLOR CODED FOR PROPER CRIMP DIE SELECTION.
 6. LOW INSTALLATION COST.
 7. RANGE TAKING CONNECTORS ALLOWS FOR LOW INVENTORY REQUIREMENT.
 8. ALLOWS FOR 2 CONTINUOUS PARALLEL CONDUCTORS.
 9. RATED 600 VOLTS/ 90 C.



PROGRAM:	SOLIDWORKS
UPDATED:	11/2023
SALES REV:	A
SIZE:	B (11x17)

Copper Compression C-Tap CT-Series



Catalog Number	Copper Conduction Size		NUMBER OF RIBS	MIN. # OF CRIMPS REQUIRED	COPPER COLOR CODE	NSI DIE CODE	NSI TOOL	DIMENSIONS		
	Main (Run)	Tap (Branch)						A	B	L
CT-101	14 SOL	14 SOL-16 SOL/STR	0	1	RED	BARE 8	M-250	0.130	0.180	0.340
	12 STR	16 STR-12 STR								
	10 STR	14 STR								
CT-102	10 STR	10 STR	0	1	BLUE	BARE 4	RDC-1/0	0.155	0.250	0.620
	8 STR	12 STR								
CT-103	6 STR	10-12 STR	0	1	GREY	BARE 4	RDC-1/0	0.235	0.325	0.620
	8 STR	8-10 STR								
CT-104	4 STR	8-12 STR	1	1	BROWN	BARE 2	RDC-1/0	0.235	0.405	1.210
	6 STR	6-8 STR								
CT-105	4 STR	6-4 STR	1	1	GREEN	INS 2	RDC-1/0	0.260	0.487	1.210
	3 STR	12-6 STR								
CT-106	4 STR	4 STR	1	1	PINK	INS 2	RDC-1/0	0.297	0.515	1.210
	3 STR	4 STR- 6 STR								
	2 STR	12 STR- 6 STR								
CT-107	1 STR	12-4 STR	2	1	BLACK	BG	OD-59	0.34	0.55	1.750
	2 STR	4-6 STR								
	3 STR	4-3 STR								
CT-108	1/0 STR	12-3 STR	2	1	ORANGE	KC12-2/0	N1240	0.420	0.620	1.750
	1 STR	4-3 STR								
	2 STR	4-2 STR								
CT-109	2/0 STR	12-3 STR	2	2	PURPLE	KC12-4/0	N1240	0.420	0.70	1.750
	1/0 STR	3-2 STR								
	1 STR	1-2 STR								
CT-110	1/0 STR	1-1/0 STR	2	2	YELLOW	KC12-250	N1240	0.480	0.80	1.750
	2/0 STR	2-1 STR								
	3/0 STR	12-2 STR								

DIMENSIONS ARE INCHES AND ARE SUBJECT TO CHANGE WITHOUT NOTICE

UL SPECIFICATIONS

UL486A LISTED WIRE CONNECTOR

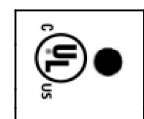
UL467 LISTED GROUNDING & BONDING

CLASS B OR C BUILDING WIRE CU CABLE ONLY

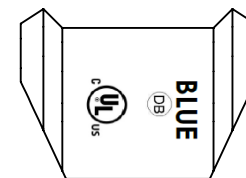
TO ORDER NSI PRODUCTS CALL
CUSTOMER SERVICE DEPT
@800-321-5847

FOR NAME OF LOCAL SALES AGENT
techteam@nsiindustries.com

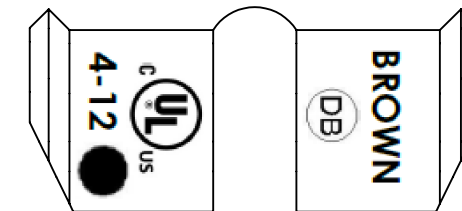
FOR PRODUCT INFO: www.nsiindustries.com



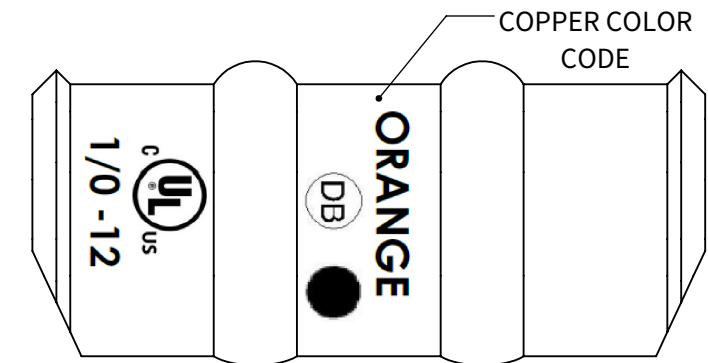
CT-101



0 RIB VIEW



1 RIB VIEW



2 RIB VIEW

