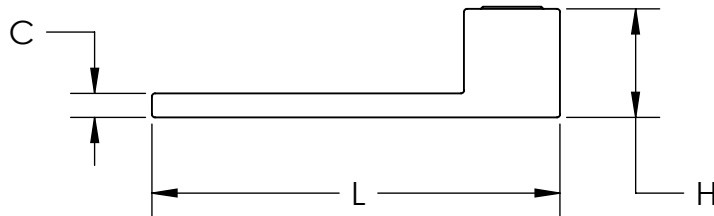
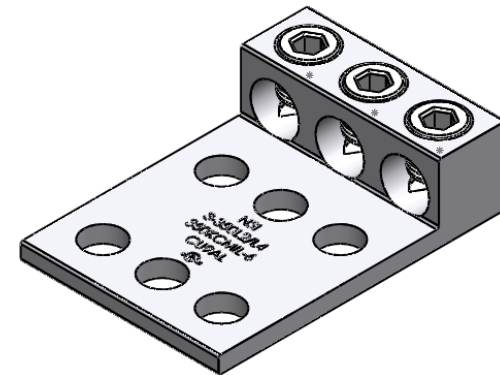
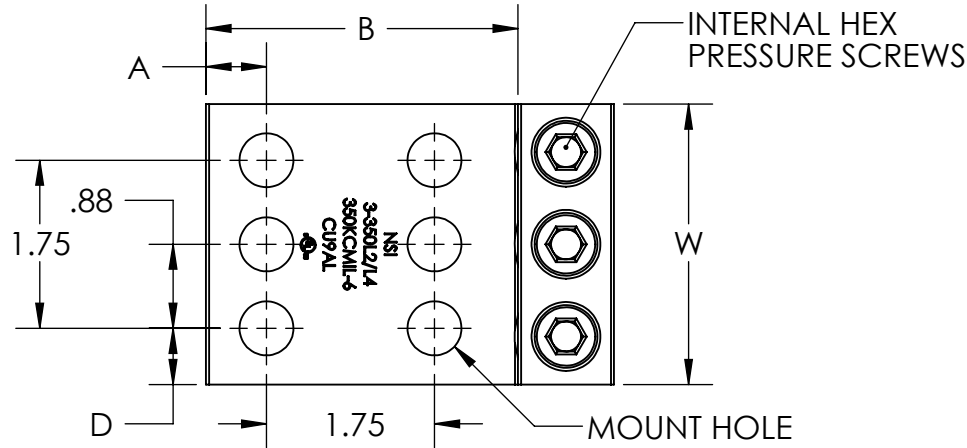




PART	WIRE RANGE	HEX SIZE	L	H	W	A	B	C	D	MOUNT HOLE
3-250L2/L4	250KCMIL - 6 AWG	5/16	3.88	1.02	2.50	.56	3.01	.22	.38	9/16
3-350L2/L4	350KCMIL - 6 AWG	5/16	4.25	1.13	2.92	.63	3.25	.25	.59	9/16
3-600L2/L4	600KCMIL - 2 AWG	3/8	4.65	1.51	3.93	.63	3.40	.38	1.09	9/16
3-800L2/L4	800 - 300KCMIL	1/2	4.75	1.69	4.06	.63	3.38	.44	1.16	9/16
3-1000L2/L4	1000 - 500KCMIL	9/16	4.94	1.88	4.69	.63	3.44	.44	1.47	9/16



CONTACT NSi FOR SALES @ 800.321.5847

NOTES:

1. TIN PLATED 6061-T6511 ALUMINUM ALLOY.
2. UL LISTED 90° C FOR COPPER AND ALUMINIUM CONDUCTOR.

**NSi** **NSi INDUSTRIES, LLC**  
**TORK** USA • 800.321.5847 • www.nsiindustries.com

PROPRIETARY AND CONFIDENTIAL		9730 Northcross Center Court Huntersville, NC 28078	
THE INFORMATION CONTAINED IN THIS DRAWING IS THE SOLE PROPERTY OF NSi Industries, LLC. Any REPRODUCTION IN PART OR AS A WHOLE WITHOUT THE WRITTEN PERMISSION OF POLARIS SALES CO. INC. IS PROHIBITED.		TITLE: NSi 3 PORT LUGS 2/4 NEMA MOUNT SERIES	
NAME	DATE	DWG. NO.	
DRAWN BY KM	9/18/2012	3-_L2/L4-SERIES	
MATERIAL: SEE NOTE		SCALE: 1:2	SHEET: 1 OF 1